

# POLYMER CONCRETE VALVE BOXES

**Strength and dependability of precast concrete at a fraction of the weight.**

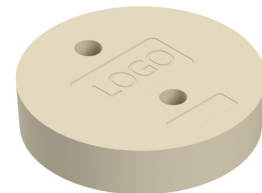
## HUBBELL G05 VALVE BOX

- Strong, light weight construction – Fiberglass Reinforced Polymer Concrete body with Cast Iron frame.
- 33% lighter than the leading precast concrete competitor.
- Meets AASHTO H20 Load Requirement.
- Meets AASHTO M306 Load Requirement.
- Fits readily available standard flush fit cast iron 11" cover.

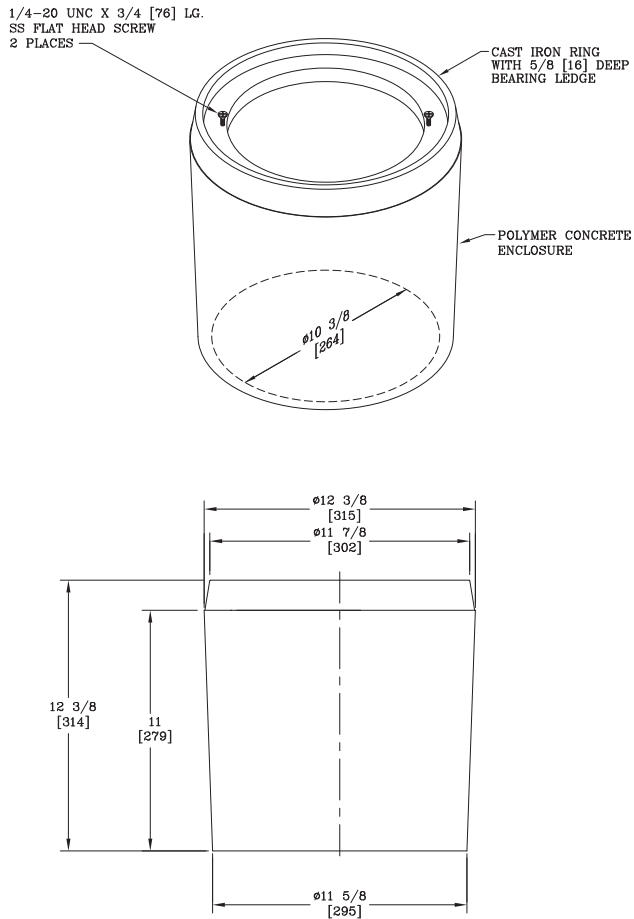


## HUBBELL F08 VALVE BOX

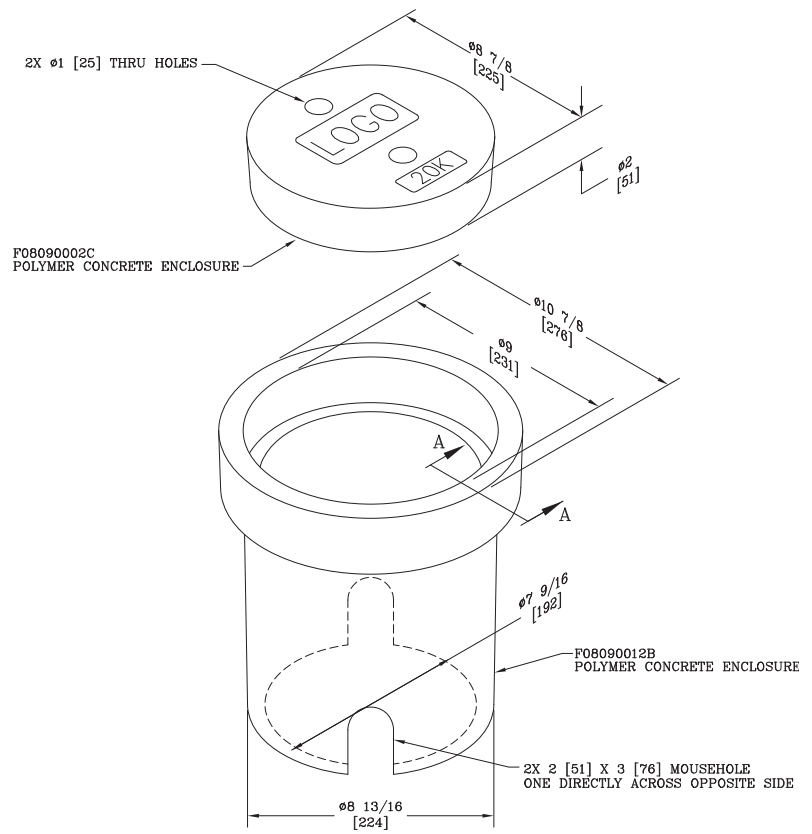
- Strong, light weight construction – Polymer Concrete body and cover.
- 33% lighter than the leading precast concrete competitor.
- 20K Load Rating is significantly higher than leading competitor.
- Interchangeable fit with leading competitor's equivalent part.



## G05110012B



## F08090012A



Part No.	Description	Diameter	Depth	Design Load #	Proof Load #	Weight #	Pallet QTY
G05110012B	G05 VALVE BOX	12 3/8"	12 3/8"	20,800	45,136	39	36
F08090012A***	F08 VALVE BOX ASSEMBLY	10 7/8"	12"	20,000	NA	28	48
F08090012B	F08 VALVE BOX	10 7/8"	12"	20,000	NA	18	48
F08090002C***	F08 VALVE BOX COVER	8 7/8"	2"	20,000	NA	10	NA

Replace \*\*\* with desired logo code.



hubbellpowersystems.com

For product inquiries, please contact your local sales representative or customer service representative.

©2020 Hubbell Incorporated.  
Because Hubbell has a policy of continuous product improvement, we reserve the right to change design and specifications without notice.  
Printed in the U.S.A. | SF\_07\_153E